

Overview of Mitsubishi Heavy Industries, Ltd. Commercial Aviation Business

July 16, 2014

Junichi Saito

Group Manager, Commercial Aviation & Transportation Systems
Business & Marketing Division, Commercial Airplanes Department
Airplanes Group

MITSUBISHI HEAVY INDUSTRIES, LTD.

- 1. Overview of MHI**
- 2. Overview of Commercial Aviation & Transportation Systems**
- 3. Overview of Commercial Aviation Tier 1 Business**

1. Overview of MHI

1. Overview of MHI



❖ **Number of Employees
(consolidated)**

80,583
(As of March 31, 2014)

❖ **Capital**

265.6 billion yen
(As of March 31, 2014)

❖ **Sales (consolidated)**

3,349.5 billion yen
(April 1, 2013 - March 31, 2014)

❖ **Number of Business Domeins**

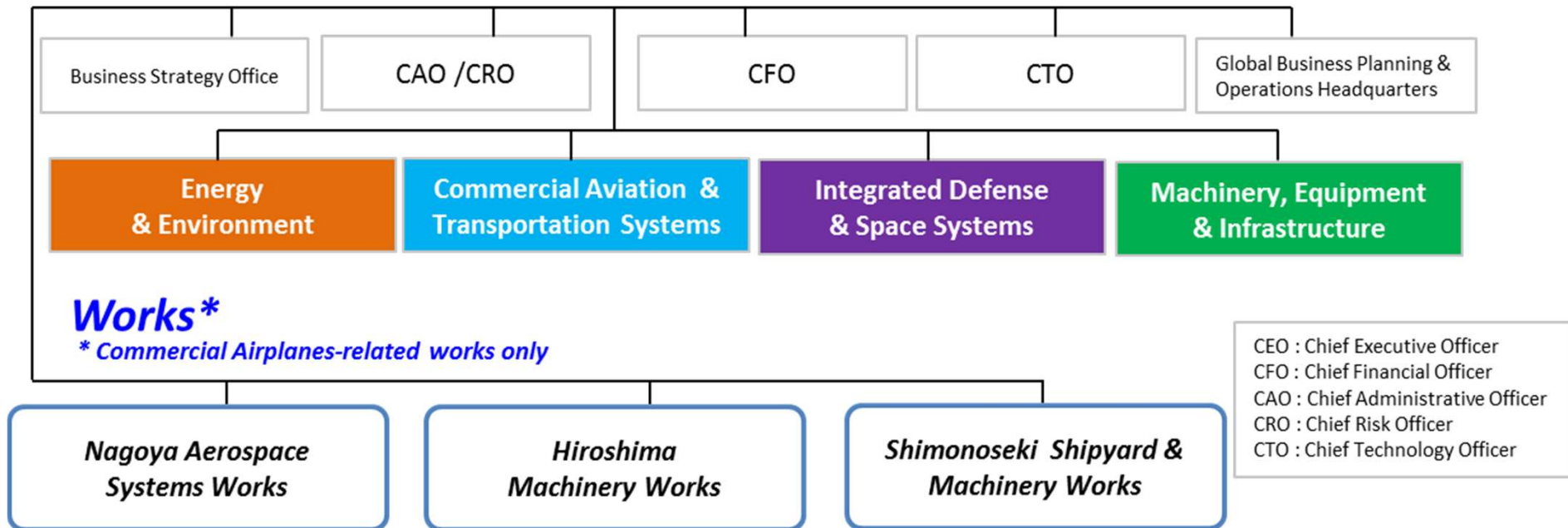
4 Business Domeins

1. Overview of MHI

- Creating Integrated Ability with Diversified Range of products



Organization Chart

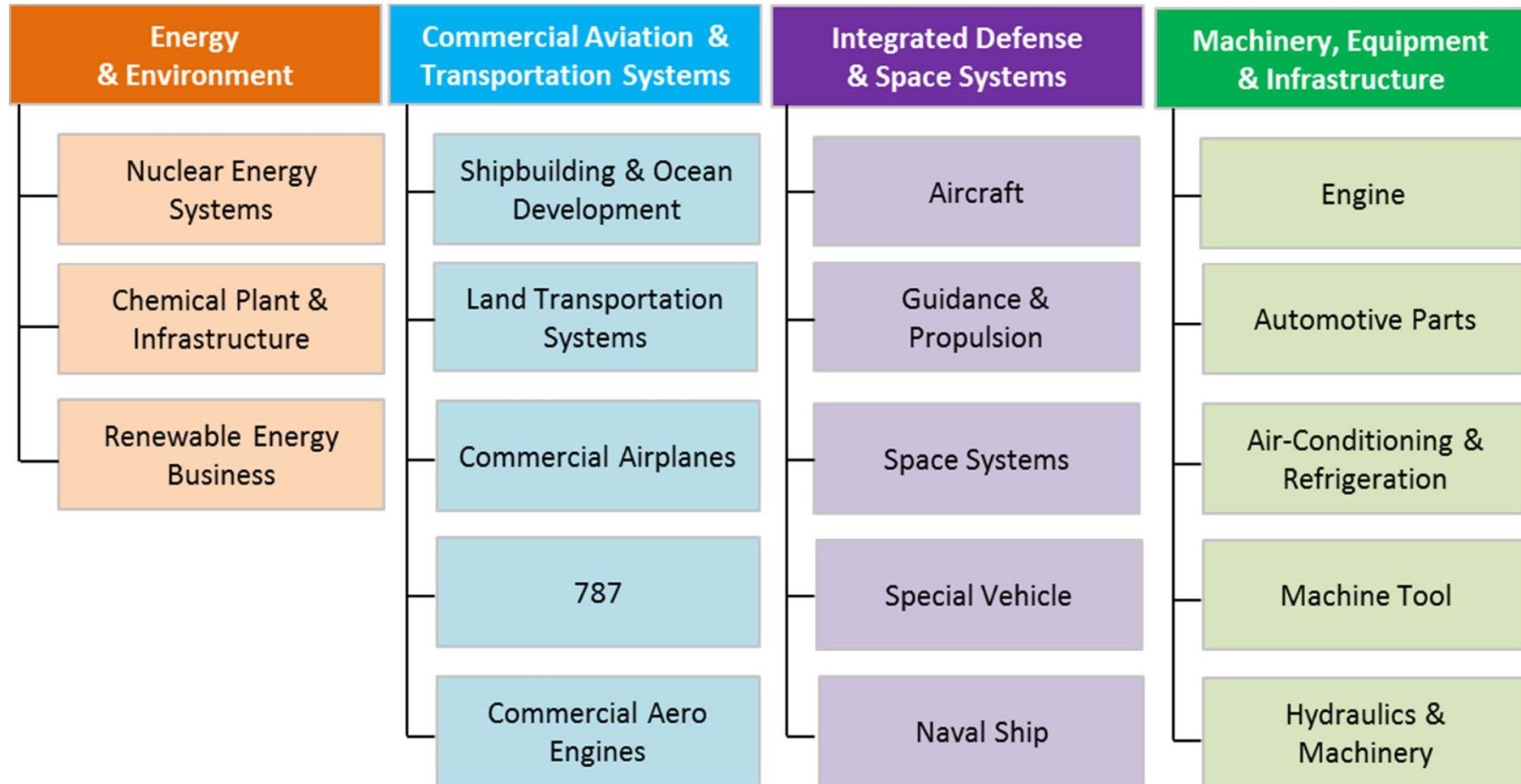


1. Overview of MHI

- Creating Integrated Ability with Diversified Range of products

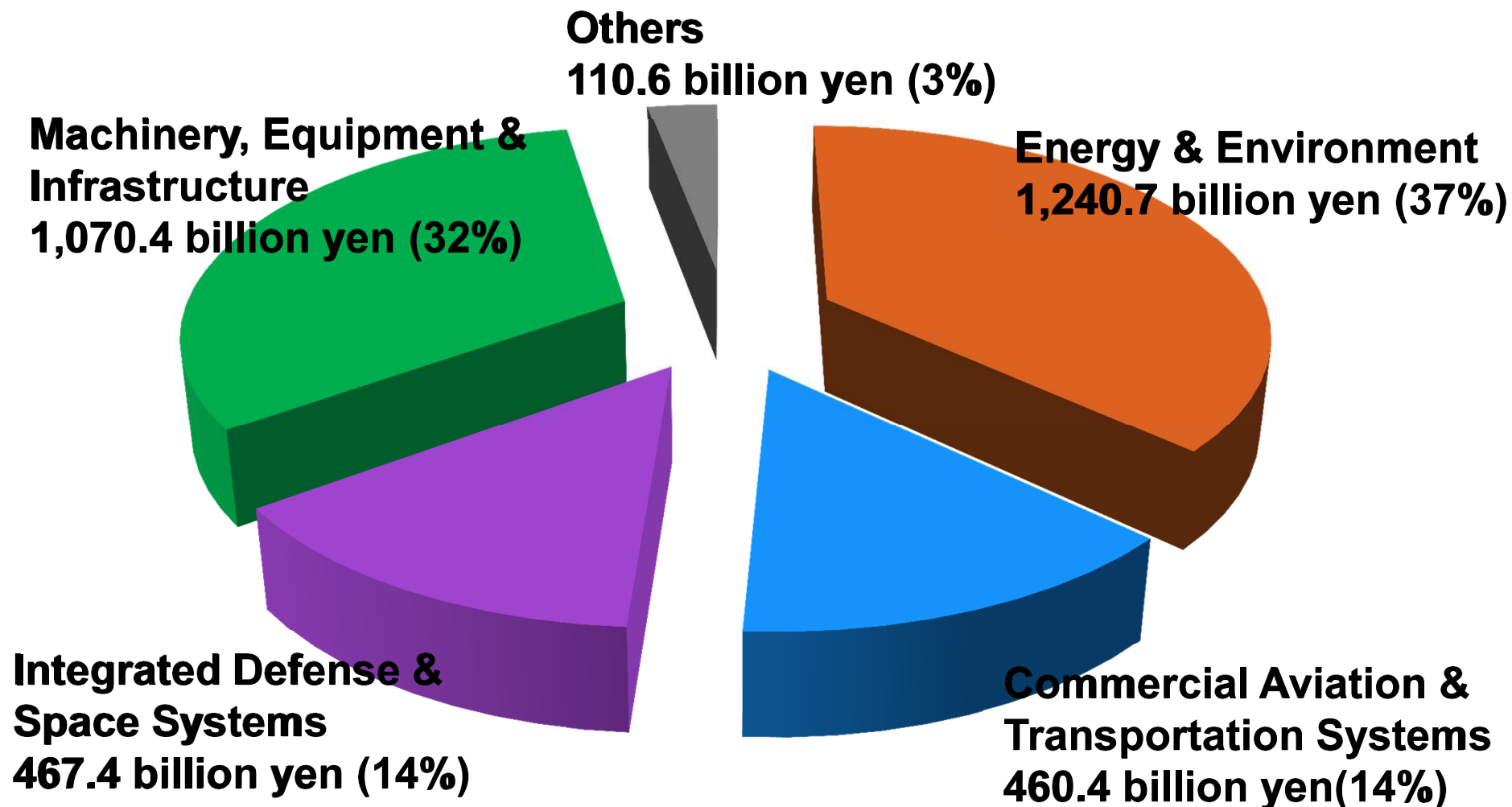


4 Business Domains



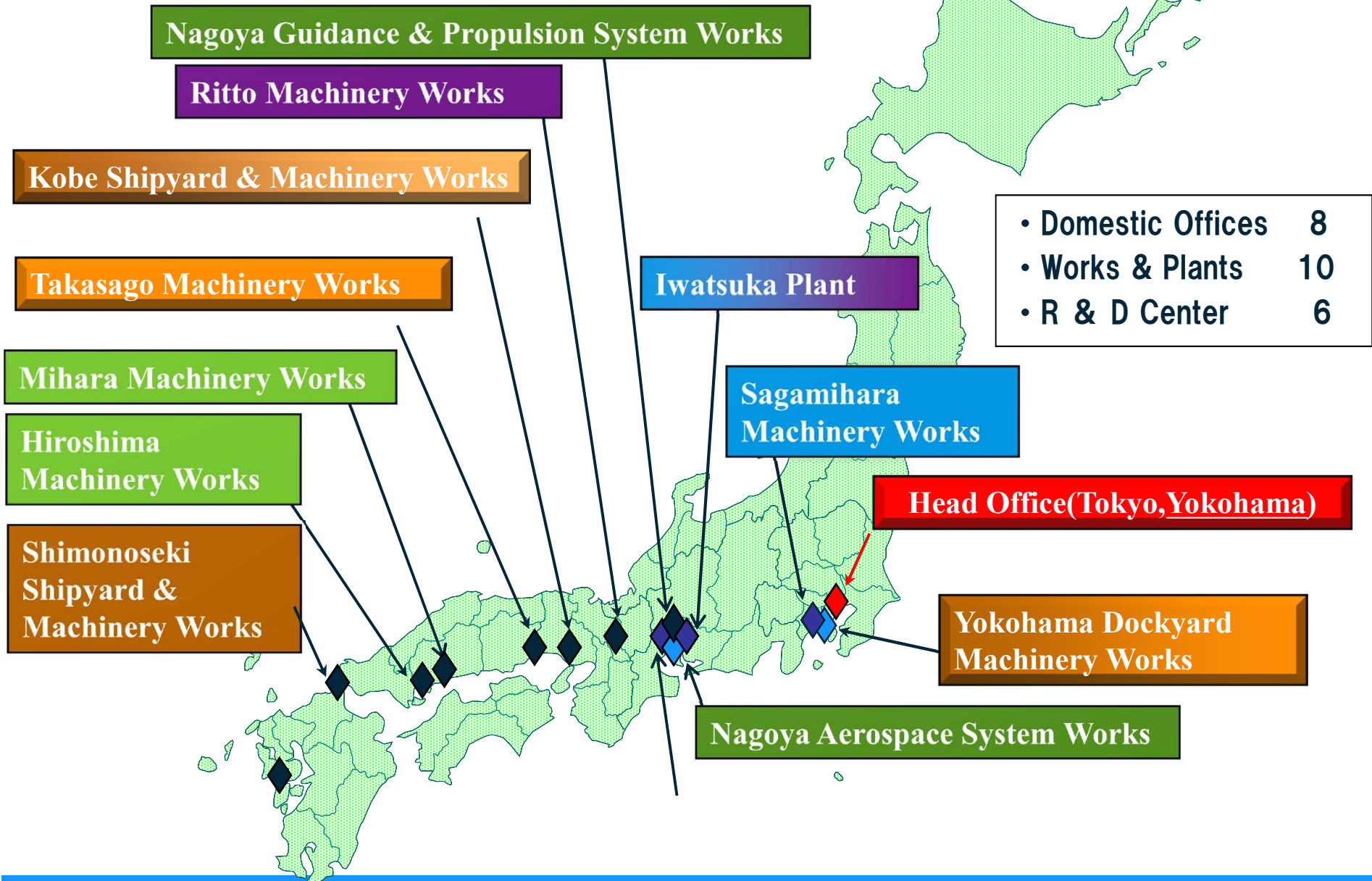
1. Overview of MHI

Sales (consolidated) : 3,349.5 billion yen



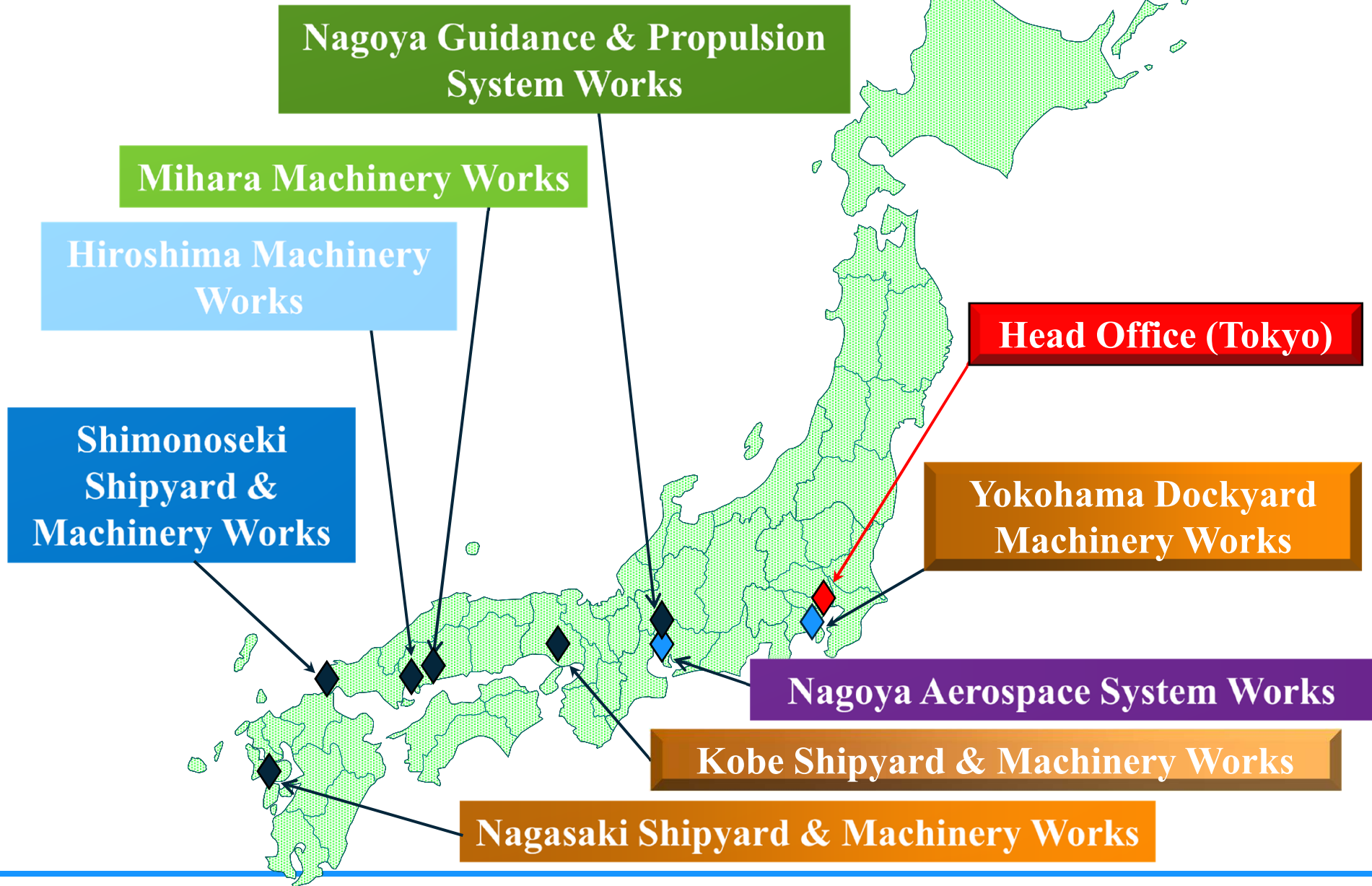
1. Overview of MHI

- Main Domestic Works



2. Overview of Commercial Aviation & Transportation Systems

2. Overview of Commercial Aviation & Transportation Systems - Main Domestic Works



3. Overview of Commercial Aviation Tier 1 Business

3. Overview of Commercial Aviation Tier 1 - Main Domestic Works



Shimonoseki Shipyard
& Machinery Works

Hiroshima
Machinery Works

Head Office
(Tokyo)

Nagoya Aerospace
System Works

3. Overview of Commercial Aviation Tier 1 – Oversea Factories



-Overseas Productions are increasing.



MHICA (MHI Canada)
- Established in 2006
- Assemble wing for GX
and Challenger 300

MHIVA (MHI Vietnam)
- Established in 2007
- Assemble 737 Inboard Flap



3. Overview of Commercial Aviation Tier 1 : Products for Boeing Program



787 [Wing Box]



777 [Aft fuselage panel, Tail fuselage, Passenger Entry doors]



767 [Aft fuselage panel, Cargo doors]



747 [Center Wing]



737 [Inboard Flap]

3. Overview of Commercial Aviation Tier 1 : Products for Airbus Program



Airbus A380 -Cargo doors



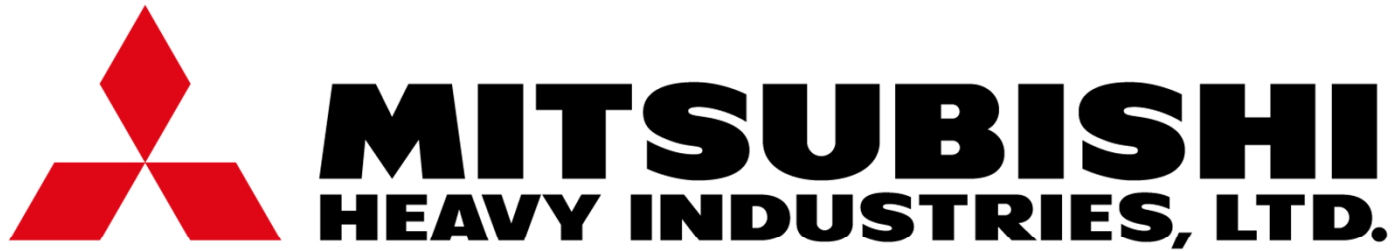
3. Overview of Commercial Aviation Tier 1 : Products for Bombardier Program



← **Global Express (GX)**
: XRS, G5000
**- Wing, Center wing,
Center Fuselage**

Challenger300 →
(CL300/CL350)
- Wing





Our Technologies, Your Tomorrow

A red arrow graphic pointing to the right, positioned below the tagline.